

AN1984

Handling Motorola Pressure Sensors

By William McDonald

INTRODUCTION

Smaller package outlines and higher board densities require the need for automated placement of components. These components are supplied in embossed carrier tape on plastic reels to meet the increased demand and facilitate ease of handling. This application note is intended to provide general information and understanding for handling Motorola's surface mount pressure sensors. Equipment details are not provided in this document and it is recommended that end users contact suppliers of equipment for specific applications.

Methods of Handling

Components can be picked from the carrier tape using either the vacuum assist or the mechanical type pick up heads. A vacuum assist nozzle type is most common due to its lower cost of maintenance and ease of operation. The recommended vacuum nozzle configuration should be designed to make contact with the device directly on the metal cover and avoid vacuum port location directly over the vent hole in the metal cover of the

device. To provide a more secure hold on the device, contact with the plastic ridge around the perimeter of the metal cover should be avoided to prevent loss of vacuum pressure. Multiple vacuum ports within the nozzle may be required to effectively handle the device and prevent shifting during movement to placement position.

Figure 1 shows two styles of multiple port vacuum nozzles for the MPXH series device as an example. Figure 2 represents the nozzle location on the device.

Vacuum pressure required to adequately support the component should be approximately 25 in Hg (85kPa). This level is typical of in-house vacuum supply.

Pick up nozzles are available in various sizes and configurations to suite a variety of component geometries. To select the nozzle best suited for the specific application, it is recommended that the customer consult their pick and place equipment supplier to determine the correct nozzle. In some cases it may be necessary to fabricate a special nozzle depending on the equipment and speed of operation.

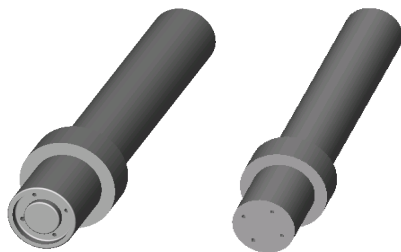


Figure 1. MPXH Series Multiple Port Vacuum Nozzles

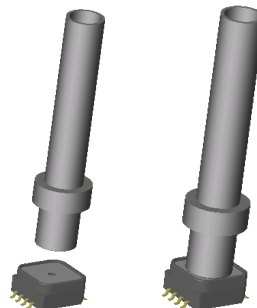


Figure 2. Nozzle Location

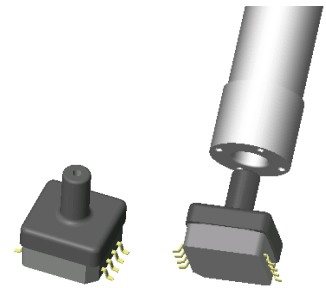


Figure 3. SSOP Axial Style Port

REV 1

Freescale Semiconductor, Inc.

Available Packages

Motorola offers several small outline surface mount device families. These are MPXA, MPXH, MPXM, and MPXY series of devices.

These devices are also available in axial ported versions to allow pressure to be interfaced to a device via a hose connection.

Pick up nozzles for these packages should be configured to apply vacuum only to the flat surface of a port base. An access clearance in the nozzle for a port shank is necessary to properly handle these device configurations. See Figure 3.



Figure 4. Available Packages

TABLE 1. Tape and Reel Information

Carrier Tape	Case	423A Chip Pak	1317 SSOP	1317A SSOP Ported	1320 M-Pak	1320A M-Pak Ported	482 SOP	482A SOP Ported	1369 SOP Side Port
Tape Width	W	24.0+/-0.3	24.0+/-0.3	24.0+/-0.3	24.0+/-0.3	24.0+/-0.3	32+/-0.3	32+/-0.3	32+/-0.3
Pocket Width	A ₀	8.5+/-0.2	7.7+/-0.1	8.8+/-0.1	6.8+/-0.1	7.2+/-0.1	11.3+/-0.1	12.0+/-0.2	12.6+/-0.2
Length	B ₀	14.2+/-0.2	10.7+/-0.1	11.8+/-0.1	12.6+/-0.1	13.2+/-0.1	18.9+/-0.1	18.8+/-0.2	18.8+/-0.2
Depth	K ₀	4.7+/-0.1	5.0+/-0.1	10.8+/-0.1	4.6+/-0.1	10.5+/-0.1	6.4+/-0.1	13.8+/-0.1	9.2+/-0.2
Sprocket Hole Pitch	P ₀	4.0 +/-0.1	4.0+/-0.1	4.0+/-0.1	4.0+/-0.1	4.0+/-0.1	4.0+/-0.1	4.0+/-0.1	4.0+/-0.1
Sprocket Hole Diagram	D ₀	1.55+/-0.05	1.55+/-0.05	1.55+/-0.05	1.55+/-0.05	1.55+/-0.05	1.5+/-0.05	1.5+/-0.1	1.5+/-0.1
Edge to Hole	E ₁	1.75+/-0.1	1.75+/-0.1	1.75+/-0.1	1.75+/-0.1	1.75+/-0.1	1.75+/-0.1	1.75+/-0.1	1.75+/-0.1
Hole to Edge	E ₂	22.2 min	22.2 min	22.2 min	22.2 min	22.2 min	N/A	N/A	N/A
Distance between Holes	S ₀	N/A	N/A	N/A	N/A	N/A	28.4+/-0.1	28.4+/-0.1	28.4+/-0.1
Pocket Pitch	P ₁	12.0+/-0.1	12.0+/-0.1	16.0+/-0.1	12.0+/-0.1	16.0+/-0.1	16.0+/-0.1	20.0+/-0.1	24.0+/-0.1
Pocket Position	P ₂	2.0+/-0.1	2.0+/-0.1	2.0+/-0.1	2.0+/-0.1	2.0+/-0.1	2.0+/-0.1	2.0+/-0.1	2.0+/-0.1
	F	11.5+/-0.1	11.5+/-0.1	11.5+/-0.1	11.5+/-0.1	11.5+/-0.1	14.2+/-0.1	14.2+/-0.1	14.2+/-0.1
Tape Thickness	T	0.40+/-0.05	0.40+/-0.05	0.40+/-0.05	0.40+/-0.05	0.40+/-0.05	0.30+/-0.05	0.35+/-0.05	0.40+/-0.05
Distance Pocket to Edge	S ₁	0.6 min.	0.6 min	0.6 min	0.6 min	0.6 min	N/A	N/A	N/A
Pocket Hole Diagram	D ₁	N/A	1.5+/-0.1	1.5+/-0.1	1.5+/-0.1	1.5+/-0.1	2.0+/-0.1	2.0+/-0.1	2.0+/-0.1
Cover Tape									
Thickness	T ₁	0.052 +/-0.01	0.052 +/-0.01	0.052 +/-0.01	0.052 +/-0.01	0.052 +/-0.01	0.052 +/-0.01	0.052 +/-0.01	0.052 +/-0.01
Width	W ₄	21.1+/-0.1	21.1+/-0.1	21.1+/-0.1	21.1+/-0.1	21.1+/-0.1	21.1+/-0.1	25.5+/-0.1	25.5+/-0.1

TABLE 1. Tape and Reel Information (Continued)

Carrier Tape	Case	423A Chip Pak	1317 SSOP	1317A SSOP Ported	1320 M-Pak	1320A M-Pak Ported	482 SOP	482A SOP Ported	1369 SOP Side Port
REEL									
Width at Hub	W_1	23.7 - 25.2	23.7 - 25.2	23.7 - 25.2	23.7 - 25.2	23.7 - 25.2	23.7 - 25.2	31.7 - 33.2	31.7 - 33.2
Width at outer flange	W_3	23.7 - 28.0	23.7 - 28.0	23.7 - 28.0	23.7 - 28.0	23.7 - 28.0	23.7 - 28.0	31.7 - 36.0	31.7 - 36.0
Overall Width	W_2	30.4 max.	30.4 max.	30.4 max.	30.4 max.	30.4 max.	30.4 max.	38.4 max.	38.4 max.
Hub Diagram	N	100+/-2.50	100+/-2.50	100+/-2.50	100+/-2.50	100+/-2.50	100+/-2.50	178+/-2.50	178+/-2.50
Arbor Hole Dia-gram	C	13.0+ 0.5/-0.2	13.0+ 0.5/-0.2	13.0+ 0.5/-0.2	13.0 +0.5/-0.2	13.0 +0.5/-0.2	13.0 +0.5/-0.2	13.0 +0.5/-0.2	13.0 +0.5/-0.2
Slot of Arbor Hole	B	1.50/2.50	1.50/2.50	1.50/2.50	1.50/2.50	1.50/2.50	1.50/2.50	1.50/2.50	1.50/2.50
Reel Diagram	A	330+/-0.76	330+/-0.76	330+/-0.76	330+/-0.76	330+/-0.76	330+/-0.76	330+/-0.76	330+/-0.76
DEVICE QTY/ REEL	MPQ	1000	1000	300	1000	400	600	100	200

Freescale Semiconductor, Inc.

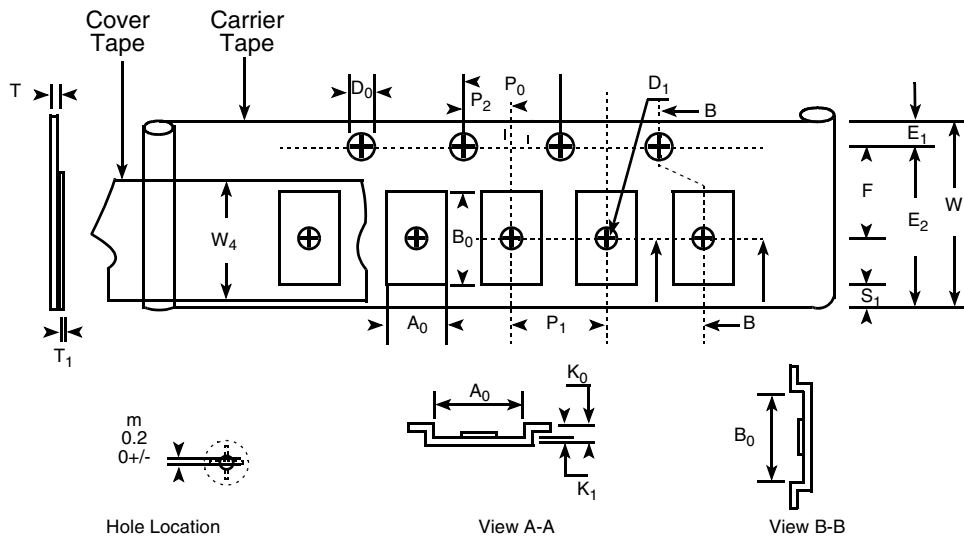


Figure 5. Carrier Tape

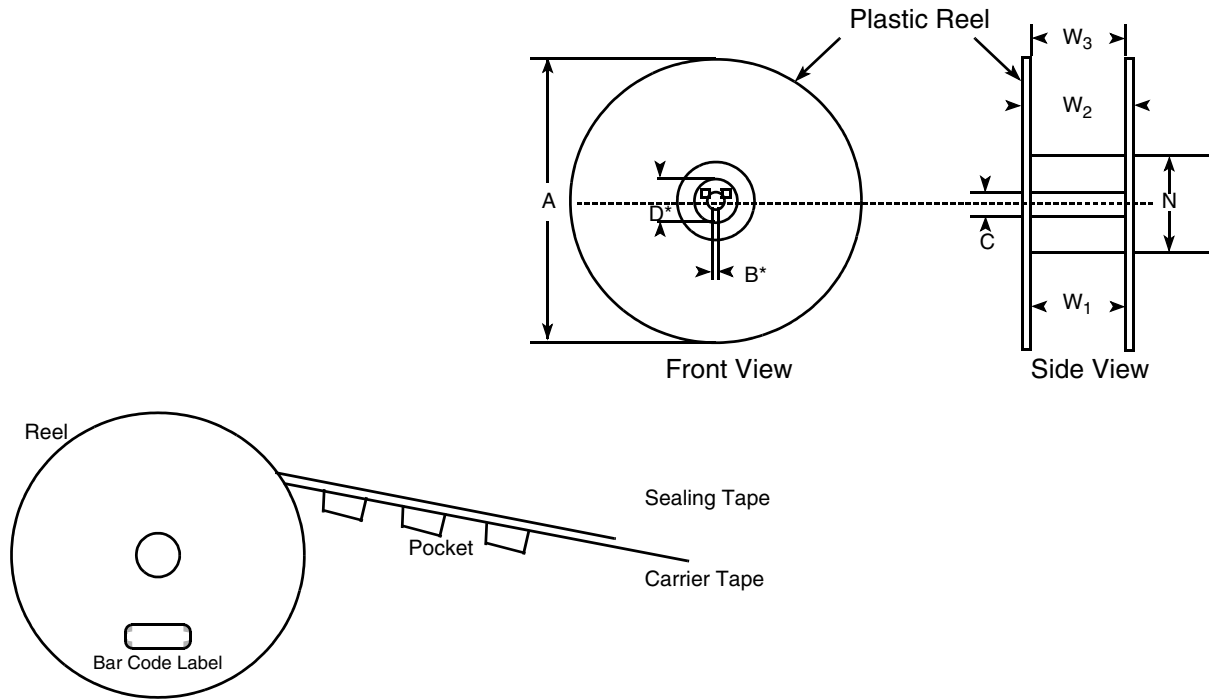


Figure 6. Reel

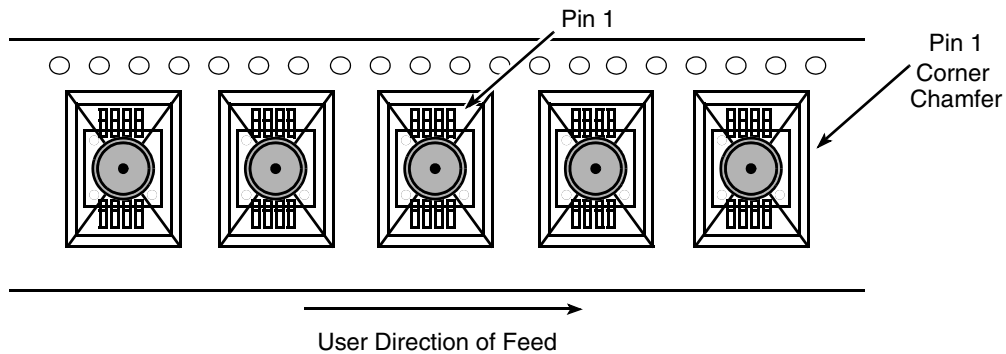
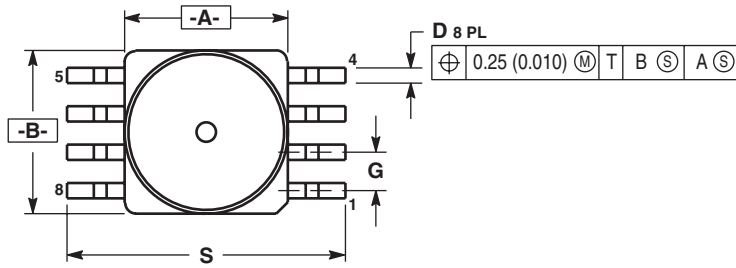


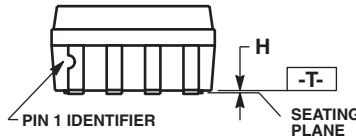
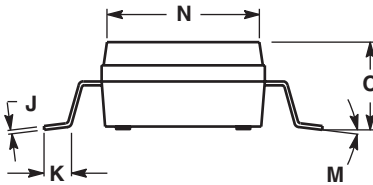
Figure 7. Orientation of Small Outline Package Sensor Device

OUTLINE DIMENSION

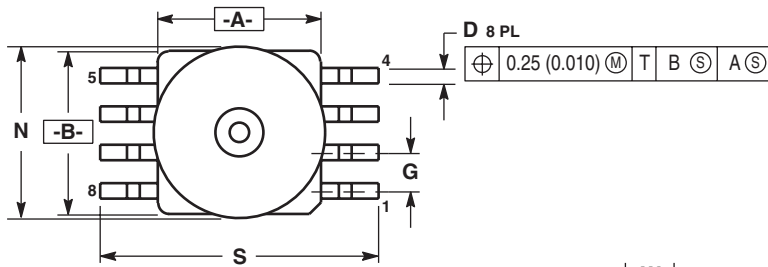


- NOTES:
 1. DIMENSIONING AND TOLERANCING PER ANSI Y14.5M, 1982.
 2. CONTROLLING DIMENSION: INCH.
 3. DIMENSION A AND B DO NOT INCLUDE MOLD PROTRUSION.
 4. MAXIMUM MOLD PROTRUSION 0.15 (0.006).
 5. ALL VERTICAL SURFACES 5° TYPICAL DRAFT.

DIM	INCHES		MILLIMETERS	
	MIN	MAX	MIN	MAX
A	0.415	0.425	10.54	10.79
B	0.415	0.425	10.54	10.79
C	0.212	0.230	5.38	5.84
D	0.038	0.042	0.96	1.07
G	0.100 BSC		2.54 BSC	
H	0.002	0.010	0.05	0.25
J	0.009	0.011	0.23	0.28
K	0.061	0.071	1.55	1.80
M	0"	7"	0"	7"
N	0.405	0.415	10.29	10.54
S	0.709	0.725	18.01	18.41

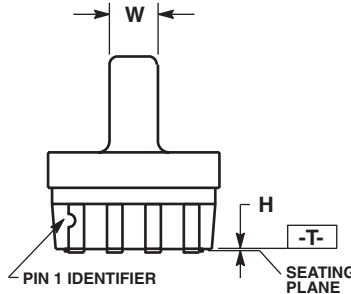
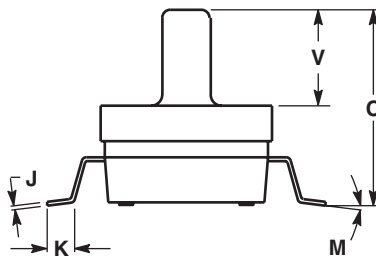


SOP PACKAGE
 CASE 482-01
 ISSUE O



- NOTES:
 1. DIMENSIONING AND TOLERANCING PER ANSI Y14.5M, 1982.
 2. CONTROLLING DIMENSION: INCH.
 3. DIMENSION A AND B DO NOT INCLUDE MOLD PROTRUSION.
 4. MAXIMUM MOLD PROTRUSION 0.15 (0.006).
 5. ALL VERTICAL SURFACES 5° TYPICAL DRAFT.

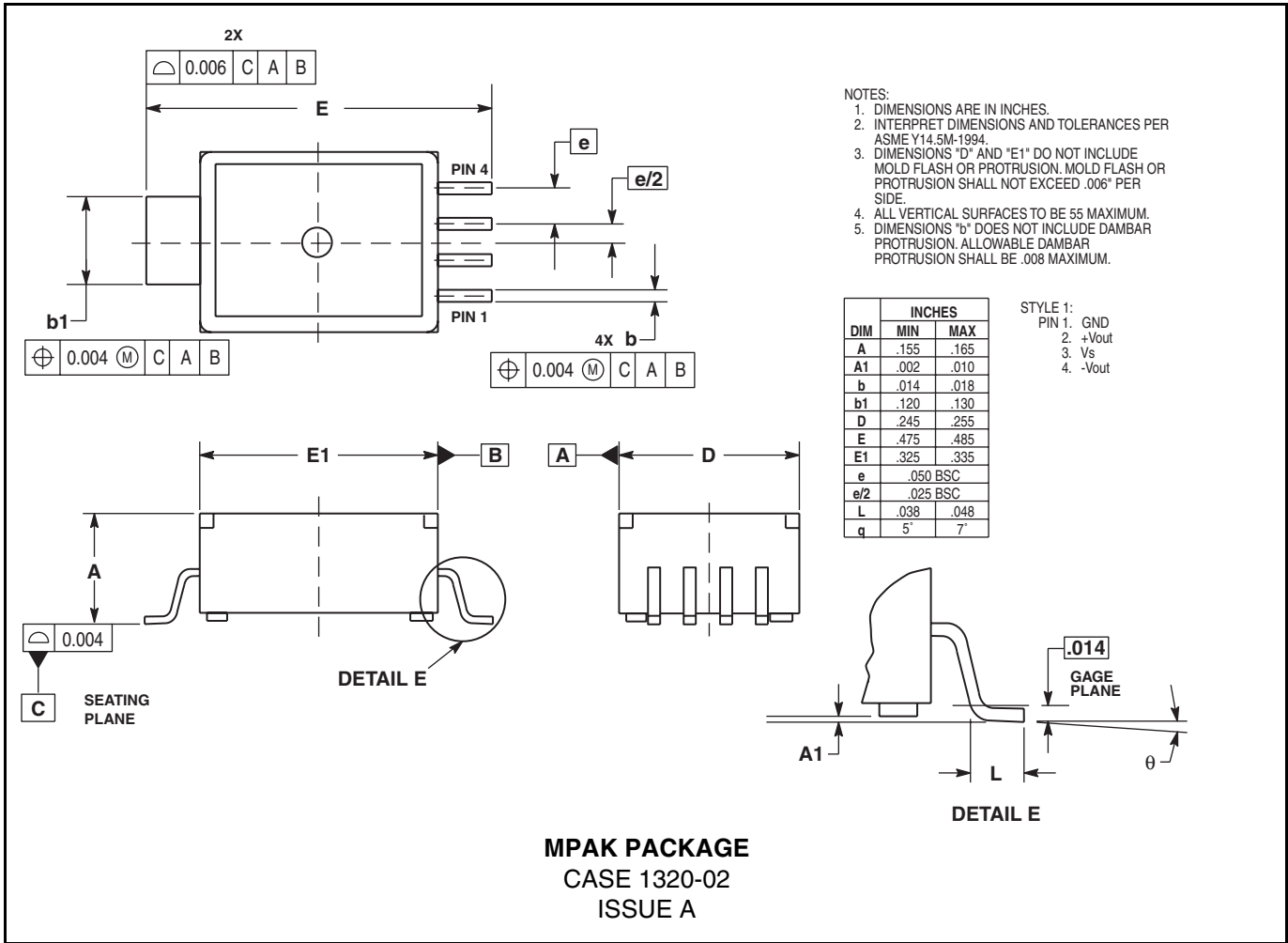
DIM	INCHES		MILLIMETERS	
	MIN	MAX	MIN	MAX
A	0.415	0.425	10.54	10.79
B	0.415	0.425	10.54	10.79
C	0.500	0.520	12.70	13.21
D	0.038	0.042	0.96	1.07
G	0.100 BSC		2.54 BSC	
H	0.002	0.010	0.05	0.25
J	0.009	0.011	0.23	0.28
K	0.061	0.071	1.55	1.80
M	0"	7"	0"	7"
N	0.444	0.448	11.28	11.38
S	0.709	0.725	18.01	18.41
V	0.245	0.255	6.22	6.48
W	0.115	0.125	2.92	3.17



SOP PACKAGE
 CASE 482A-01
 ISSUE A

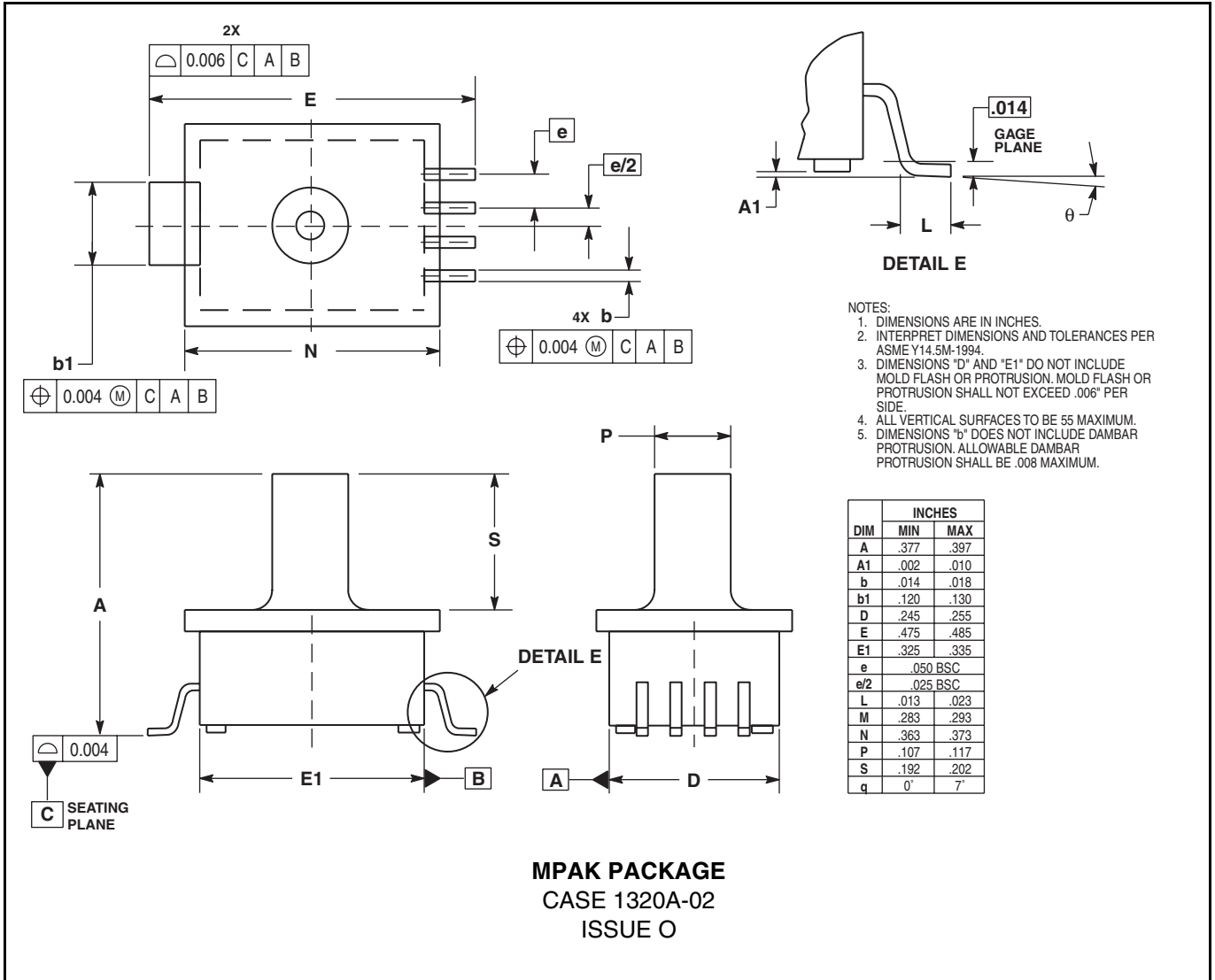
Freescale Semiconductor, Inc.

OUTLINE DIMENSION



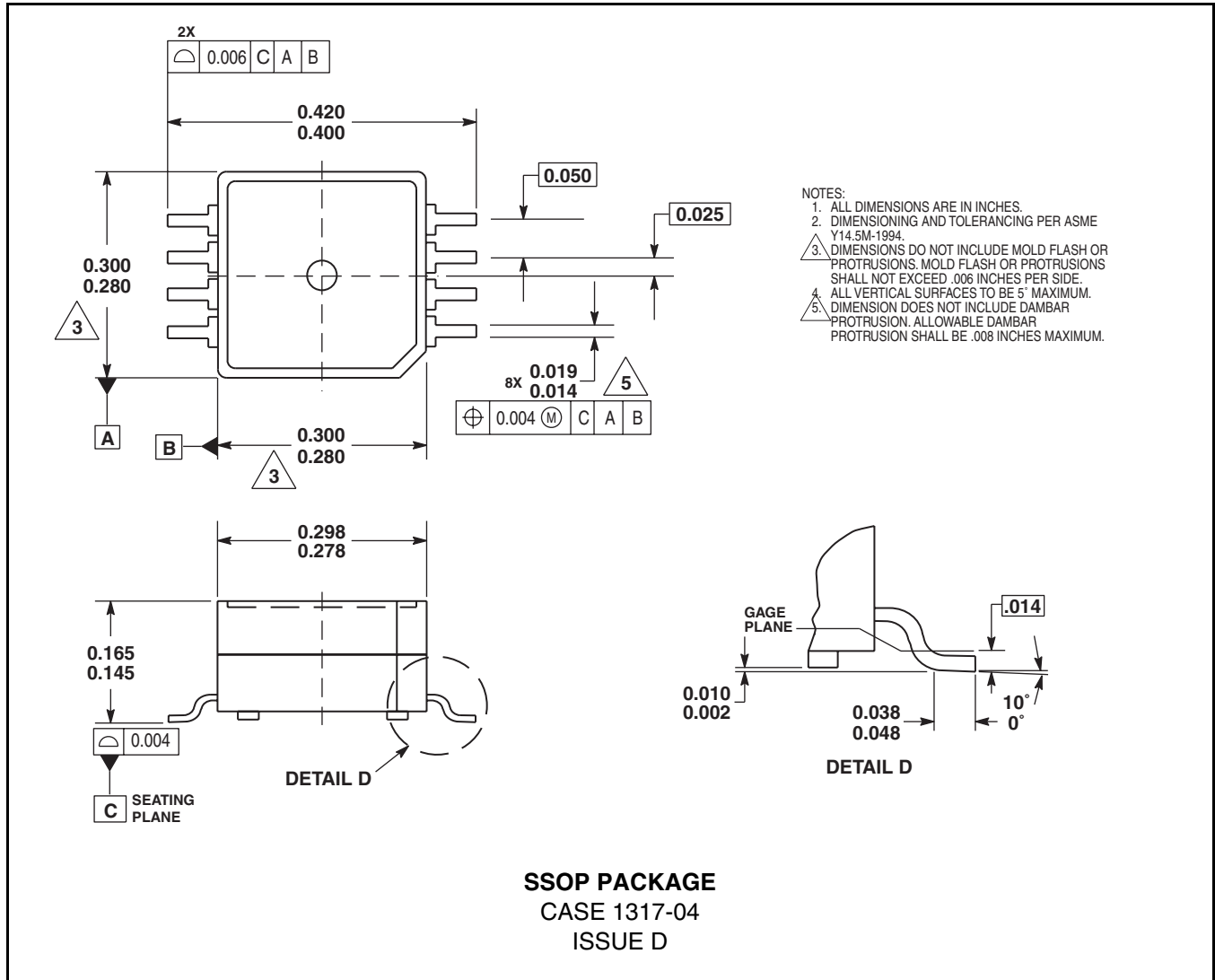
Freescale Semiconductor, Inc.

OUTLINE DIMENSION



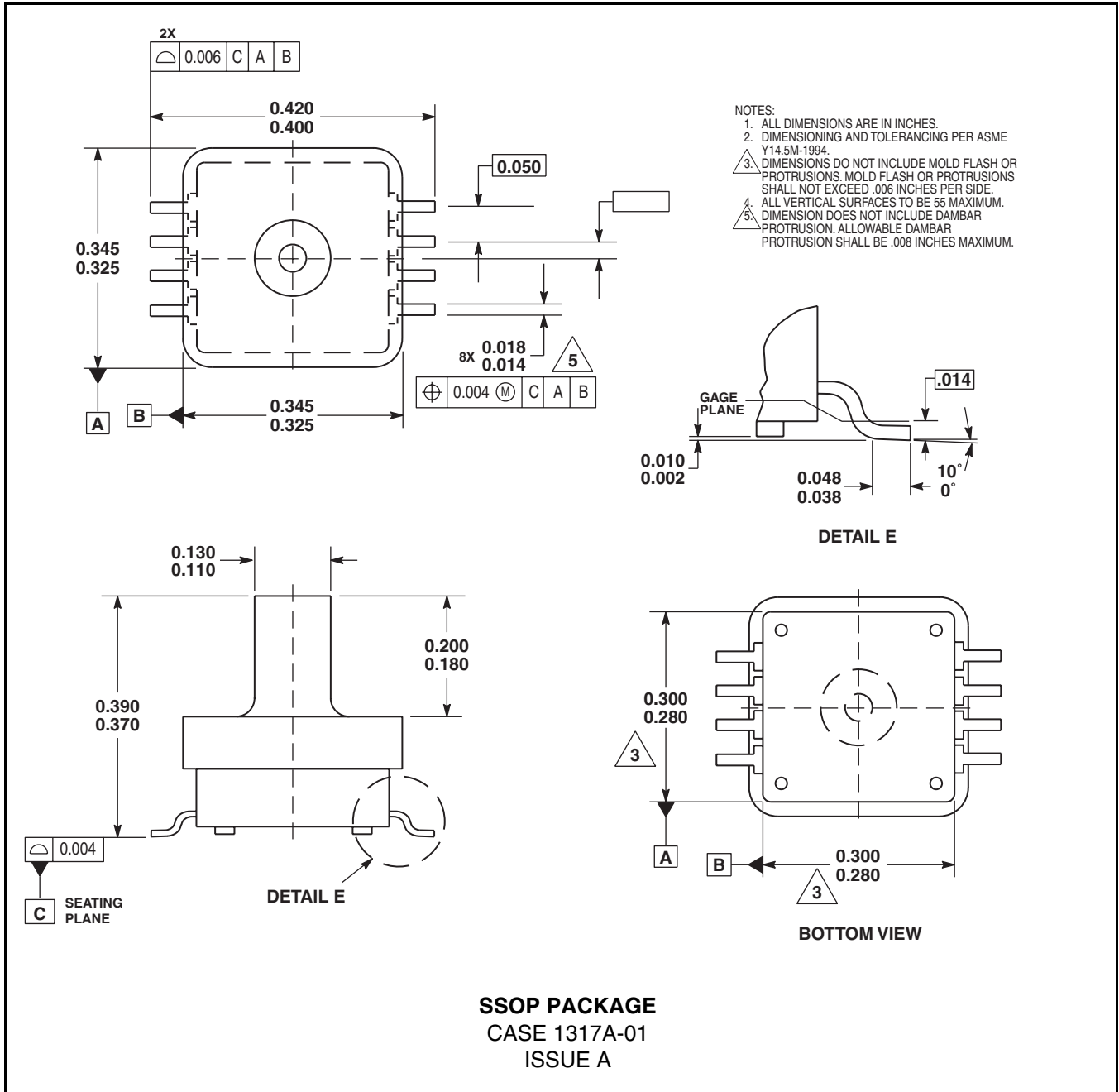
Freescale Semiconductor, Inc.

OUTLINE DIMENSION



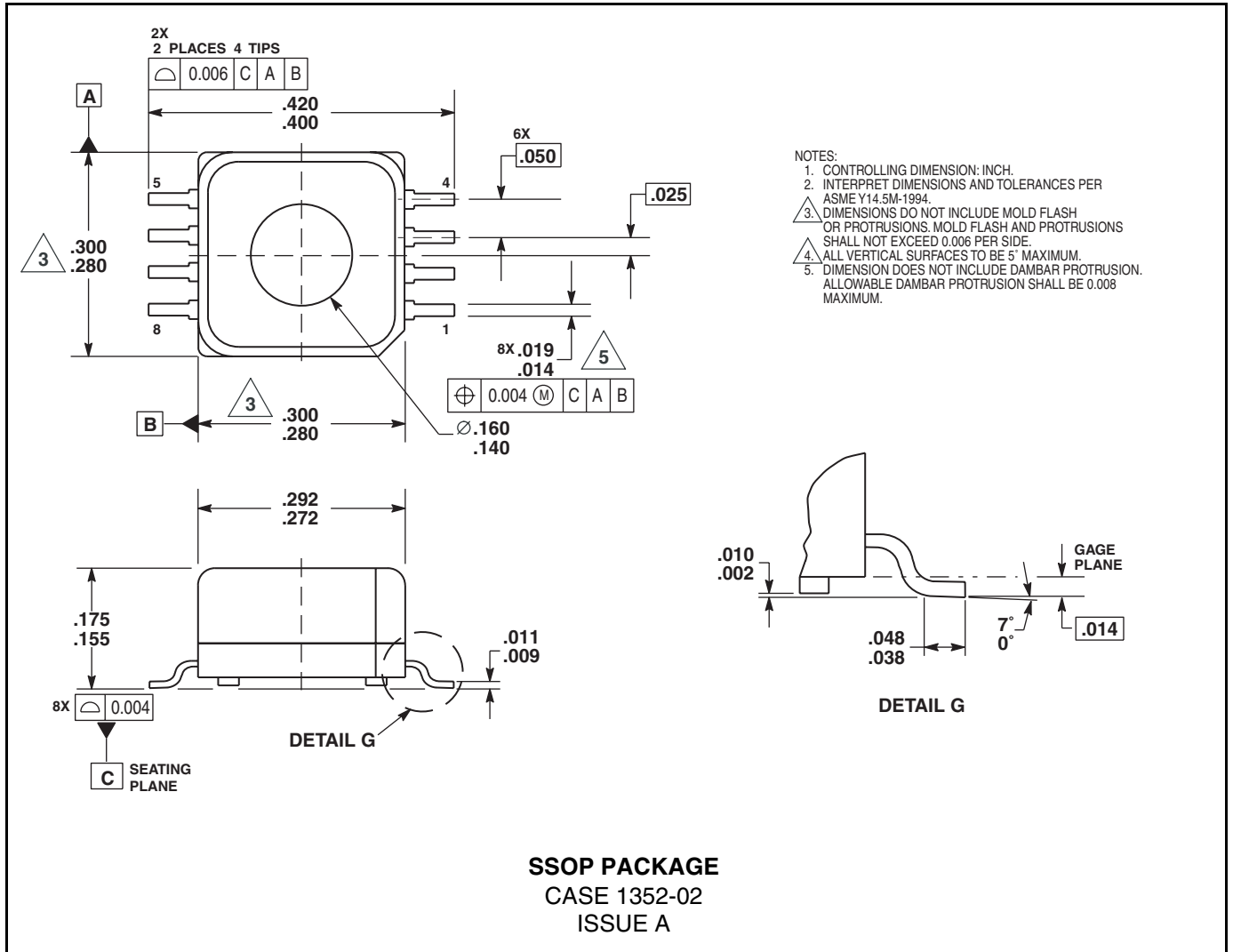
Freescale Semiconductor, Inc.

OUTLINE DIMENSION



Freescale Semiconductor, Inc.

OUTLINE DIMENSION



NOTES

Freescale Semiconductor, Inc.

Information in this document is provided solely to enable system and software implementers to use Motorola products. There are no express or implied copyright licenses granted hereunder to design or fabricate any integrated circuits or integrated circuits based on the information in this document.

Motorola reserves the right to make changes without further notice to any products herein. Motorola makes no warranty, representation or guarantee regarding the suitability of its products for any particular purpose, nor does Motorola assume any liability arising out of the application or use of any product or circuit, and specifically disclaims any and all liability, including without limitation consequential or incidental damages. "Typical" parameters which may be provided in Motorola data sheets and/or specifications can and do vary in different applications and actual performance may vary over time. All operating parameters, including "Typicals" must be validated for each customer application by customer's technical experts. Motorola does not convey any license under its patent rights nor the rights of others. Motorola products are not designed, intended, or authorized for use as components in systems intended for surgical implant into the body, or other applications intended to support or sustain life, or for any other application in which the failure of the Motorola product could create a situation where personal injury or death may occur. Should Buyer purchase or use Motorola products for any such unintended or unauthorized application, Buyer shall indemnify and hold Motorola and its officers, employees, subsidiaries, affiliates, and distributors harmless against all claims, costs, damages, and expenses, and reasonable attorney fees arising out of, directly or indirectly, any claim of personal injury or death associated with such unintended or unauthorized use, even if such claim alleges that Motorola was negligent regarding the design or manufacture of the part.

MOTOROLA and the Stylized M Logo are registered in the US Patent and Trademark Office. All other product or service names are the property of their respective owners.

© Motorola, Inc. 2004

HOW TO REACH US:

USA/EUROPE/LOCATIONS NOT LISTED:
Motorola Literature Distribution
P.O. Box 5405, Denver, Colorado 80217
1-800-521-6274 or 480-768-2130

JAPAN: Motorola Japan Ltd.; SPS, Technical Information Center
3-20-1 Minami-Azabu, Minato-ku, Tokyo 106-8573, Japan
81-3-3440-3569

ASIA/PACIFIC: Motorola Semiconductors H.K. Ltd.; Silicon Harbour Centre
2 Dai King Street, Tai Po Industrial Estate, Tai Po, N.T., Hong Kong
852-26668334

HOME PAGE: <http://motorola.com/semiconductors>



MOTOROLA

**For More Information On This Product,
Go to: www.freescale.com**

AN1984